

# Slurry Surfacing & Microsurfacing

For footways



# Rejuvenating Cost Effective Footway Treatments

Colas Ltd operates throughout the UK as a service provider to the highway and airfield sectors. As part of the International Colas Group, Colas can draw upon the resources and expertise of one of the worlds leading organisations, for construction and maintenance within the roads and airfields industry.



Colas supplies a range of slurry surfacing and microsurfacing treatments, designed to improve the appearance of any footway and reduce the number of trips and alleviate the ingress of water, thereby preventing further damage.

Incorporating polymer modified, fibre enhanced binders, Colas footway treatments are suitable for the refurbishment of footways, car parks, playgrounds, central reservations, traffic islands and hard shoulders.

The surface texture can be varied to suit client's requirements providing a uniformed finish throughout the locality. All treatments are cold applied and do not require heavy compaction equipment, as a result fumes and noise are kept to a minimum and disruption to the local community is significantly reduced.

The process is accredited to the National Sector Scheme 13b.

PROBLEM AFFECTING FOOTWAY	RECOMMENDED TREATMENT		
	Bitutex	Paveseal	Pavecoat
Appearance requires improvement	✓	✓	✓
Needs to be sealed against the weather	✓	✓	✓
Requires new veneer surface	✓	✓	✓
Hungry or fretting surface	✓	✓	✓
Concrete requires renovation	✓	✓	✓
Depressions of up to 15mm		✓	✓
Depressions of over 15mm		✓	✓
Badly deformed			✓

- **A convenient and cost effective way of providing a new veneer wearing course on existing surfaces**
- **Rapid setting hand applied process**
- **Improves appearance and provides a smart uniform surface**
- **Various thicknesses and textures available**
- **A full contracting service provided.**

## Bitutex FP

### Rapid setting hand applied slurry surfacing



Bitutex FP is a high quality, cold, hand applied, cost effective slurry surfacing consisting of a blend of bitumen emulsion and aggregate, carefully mixed on site to specific proportions. This special combination is designed to protect existing surfaces and to prevent deterioration from the effects of weather.

The rapid setting feature of Bitutex FP allows the process to be completed with minimised inconvenience and the surface is ready for use by pedestrians and traffic within minutes of application.

Bitutex FP is ideal for the maintenance of; footways, traffic islands, car parks, runways, playgrounds, cycle tracks, central reservations and hard shoulders.

A nominal 3mm or 5/6mm application is standard, but other gradings can be used to provide greater flexibility with regulating properties. A full inspection of every site can be undertaken and advice given accordingly.

Bitutex FP complies with the requirements of BS:434 (parts 1 & 2) 1984 as well as Clause 918, Specification for Highway Works as issued under the Department of Transport (England); Scottish Development Department; Welsh Office and Department of the Environment (Northern Ireland).

Colas will provide a full contracting service, including a comprehensive technical advisory service, site inspections, traffic management and aftercare treatment, all backed by a full guarantee.

#### Bitutex FP offers a number of key properties:

- **Slurry surfacing seals and provides a new wearing course on all types of macadam and asphalt surfaces**
- **Extends the life of macadams and asphalts which are showing signs of deterioration but remain structurally sound**
- **Provides an immediate and visible improvement to the surface.**

## Pave Seal Premium fibre reinforced slurry surfacing

**Where to use.** Particularly suitable for urban and residential areas. Suitable for sites which require regulation but where the surface deterioration is not so great as to require treatment with Pavecoat. Suitable for all types of asphalt and macadam and for the refurbishment of worn concrete surfaces.

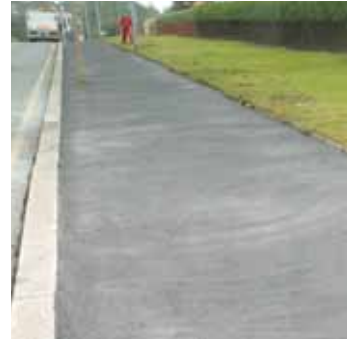
**Grade.** Range of materials from 1.5mm to 5mm nominal size aggregate, capable of being applied up to 20mm thick.

**Colours.** Generally black and red, but other colours can be supplied on request.

**Trafficking Time.** Depends on grade and atmospheric condition but typically 30 minutes.



Pavecoat Cold applied, polymer modified,  
fibre reinforced slurry surfacing



**Longlasting.** The combination of a polymer modified binder with fibres and specially selected aggregate, increases the cohesive strength of the material and extends the overall life of the new footway surface.

**Effective.** Controlled flow properties allow the surface to be profiled to fine tolerances regardless of existing contours.

**Where to use.** Ideal for urban and residential areas where there is a requirement for a longer lasting and more durable surface than that provided by conventional slurry microsurfacing methods. Particularly appropriate for surfaces which have deteriorated badly. Suitable for all types of asphalt and macadam and for the refurbishment of worn concrete surfaces.

**Grade.** Overlay thickness is variable up to a depth of 40mm in one application. On those sites which require regulating and reprofiling in excess of 40mm, more than one coat can be applied.

**Colours.** Black or red.

**Trafficking Time.** Within 30 minutes.

**Regional Office**

Dysart Road  
Grantham  
NG31 7LG  
T: 01476 404 200  
F: 01476 404 215  
E: info@colas.co.uk



Colas Limited, Wallage Lane  
Rowfant, Crawley  
West Sussex RH10 4NF  
T: 01342 711000  
F: 01342 711199  
E: info@colas.co.uk

[www.colas.co.uk](http://www.colas.co.uk)